

Columbia University is one of the oldest institutions of higher education in the United States, and it carries a proud history of scholarship and achievement within its halls. In 2002, a decision was taken to refit the new Language Resource Center with a state-of-the-art Sanako Lab 300 (ICM/Divace Duo). Two years later, Center Director Dr. Stephane Charitos believes the investment is paying big dividends.

COLUMBIA UNIVERSITY, NEW YORK

- Located in Upper Manhattan, New York
- Annual student enrollment of 23,000
- Students from more than 150 countries
- 4,000 faculty members
- courses offered in more than 50 foreign languages

SANAKO THE PERFECT SOLUTION

- SANAKO Lab 300 (ICM/Divace Duo)
- SANAKO Study 100 (Imperata)
- SANAKO Study 300 (Library Pilot)
- 73 student stations in language lab
- provides access to more than 6,000 digital video and audio resources

Customer Overview

Columbia's Language Resource Center in the School of Arts & Sciences is committed to making use of the most effective instructional technologies in order to enhance the teaching of languages. The Centre provides the Columbia Community with access to digital audio and video collections for language study and instruction.



Sanako Lab 300 was the ideal solution for Columbia University.

New Facilities, Old Systems

The Learning Resource Center renovated its traditional language lab, which was located in the Lewisohn Hall, and also constructed a new facility in the International Affairs Building of the campus. Center Director Dr. Stephan Charitos faced the challenge of equipping the labs with systems that would reflect the administration's belief that technology can be positively applied to language teaching and support the learning of language skills. The Director also wanted to install systems that would bring creativity and imagination to language instruction at the Language Resource Center.

Technology and Language – A Perfect Marriage

It soon became clear that a SANAKO Tandberg Educational Solution – the SANAKO Lab 300 - would allow Columbia's language students to benefit from both teacher-led and self-access solutions to language learning. Columbia performed a major task in digitizing all their analog teaching material, which took several months, but now they can make use of the more than 6,000 digital audio and video resources available to them. The facility also permits lecturers and staff to prepare, deliver and manage content in a technologically sophisticated yet user-friendly lab environment. Now two years after its installation, usage at the lab has grown to reflect the relevance of the SANAKO solution for language instruction at Columbia University. Dr. Charitos noted that there are currently 12,000 users of the system, representing 8,000 regular users, 2,000 students who learn English as a Second Language (ESL), and 2,000 teachers in training from Barnard Teachers College.



BRINGING LANGUAGE TEACHING BACK TO LIFE

- up to 12,000 current users
- content management capabilities
- easy-to-use authoring studio
- teachers can create original instructional material
- language lab facilitates student work in small groups
- students can create their own applications

Teachers and Students Learn Together

Combining new technology with traditional approaches to language teaching is the core of the success of the SANAKO Lab 300, according to Center Director. He says this has stimulated new interest and excitement among faculty members who have now rediscovered their mission to teach languages. Many of the students who receive instruction in the primary language lab at Lewisohn Hall do so at the beginner and intermediate levels, so the capability to provide training to individuals and groups, along with pronunciation and testing features, are important. At the LRC, users of the facility are more advanced, and have the opportunity to use the latest computer and video technology to create their own methods of applying their foreign language skills. Here too, instructors can use the modern authoring studio for creating original teaching material which can then be made available to the student body. The ability of the faculty to conduct tests using the SANAKO system has also contributed directly to its success among the teachers.

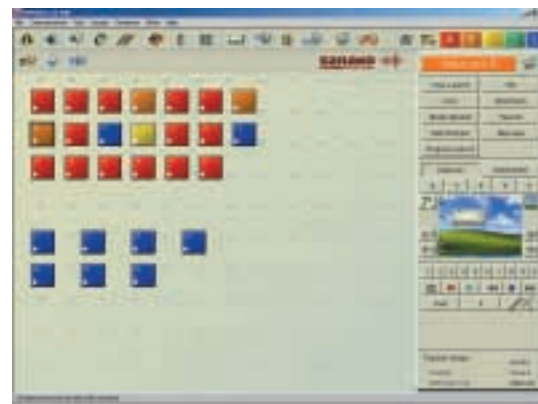
A Solution for Everyone

For LRC Director, Dr. Charitos, the marriage between technology and language teaching has helped encourage faculty members to re-focus on their core mission of teaching languages, simply because the technology acts as a facilitator to make teaching easier, and more exciting. Columbia University is now paying a lot more attention to globalization, and as a result, the emphasis on language education now touches all faculties and curricula. The key task of the language faculties is no longer seen as merely

producing academic achievement, but also developing actual language skills among the students. The language education program of more than 50 languages enhances the global appeal and image of the University, which recruits many students from abroad.

The new SANAKO labs have also enhanced course content by allowing lecturers to incorporate more and varied content into their sessions. This has resulted in increased attendance and usage in the new labs, as both teachers and students take full advantage of the labs' many stimulating features.

According to Dr. Charitos, the enthusiasm about the new language labs cuts across the entire campus. "The teachers are showing excitement, department chairs are more interested in language teaching, and the administration also gets excited; they are happy to bring visitors here."

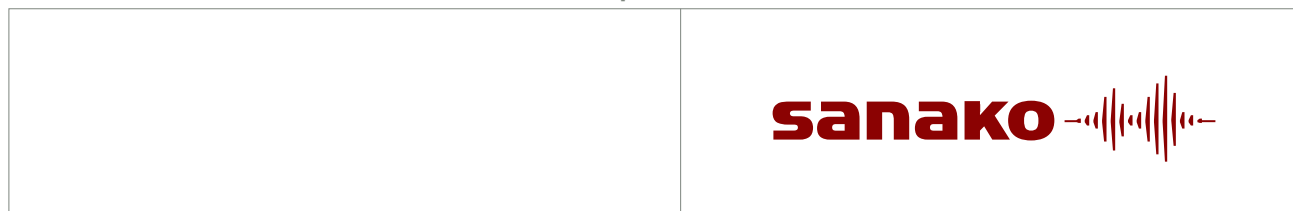


SANAKO Lab 300 Teacher Software.

Our distributor in the US:
TANDBERG EDUCATIONAL INC
www.tandberg-us.com

Dealer for this system:
EDUCATIONAL TECHNOLOGY Inc.
www.etimm.com

For more information about SANAKO Corporation visit our website at www.sanako.com.



SANAKO products are designed and manufactured in Finland.

SANAKO Corporation, Kaurakatu 46, P.O. Box 41,
FI-20741 Turku, FINLAND, info@sanako.com, www.sanako.com
SANAKO User Club and Community: <http://members.sanako.com>

1861050-4093